



## XGPS150 v3.0.3 Update Guide for PC Only

The firmware v3.0.3 is compatible with all XGPS150 models.

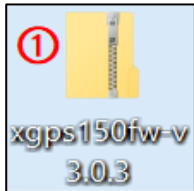
If you have any questions about XGPS150, please contact us at [cs@dualav.com](mailto:cs@dualav.com).

### A. To update the firmware, v3.0.3, by using PC, you will need:

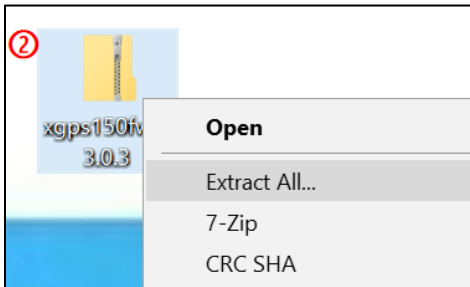
- XGPS150
- USB a – USB b cable (USB-to-mini-USB cable)
- Computer or laptop running Windows OS (XP or beyond) with an available USB port
- SkyPro app (to check the firmware version after installation)

### B. Update Instructions

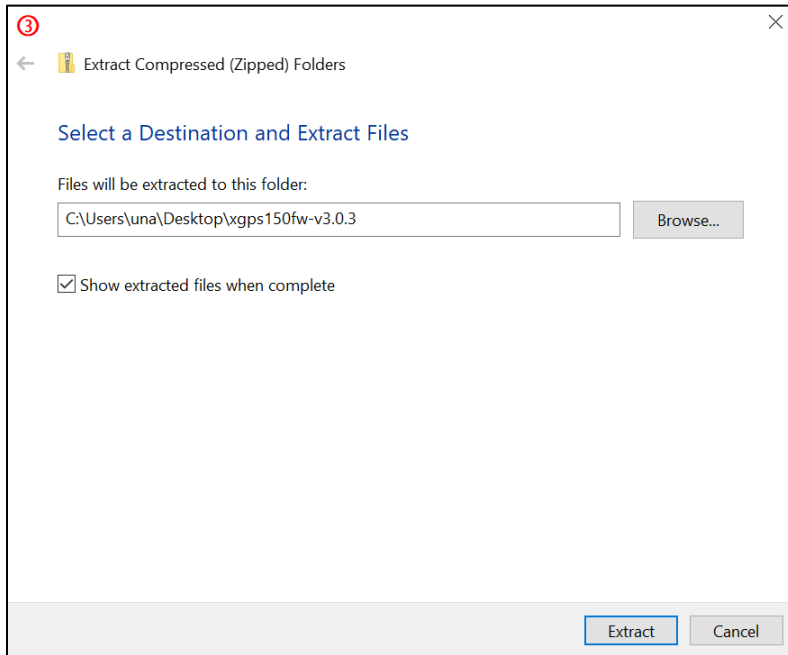
1. Go to Dual XGPS150 firmware page: <http://gps.dualav.com/explore-by-product/xgps150a/>
2. Click on the “Firmware” tab. Download both XGPS150 Firmware Update Pack and Manual.
3. Unzip the downloaded firmware. Please follow the five sub-steps provided below.



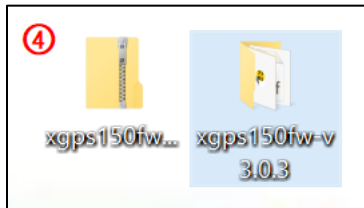
① Find the downloaded zip file on your computer.



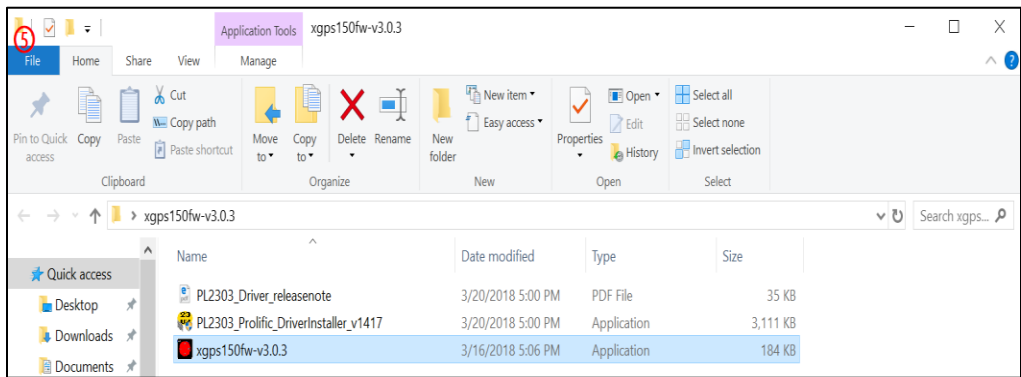
② Click the right button on your mouse/trackpad and choose “Extract All”.



③ Go to “Browse” and choose a place on your computer to extract the zip file. Then, click “Extract”.

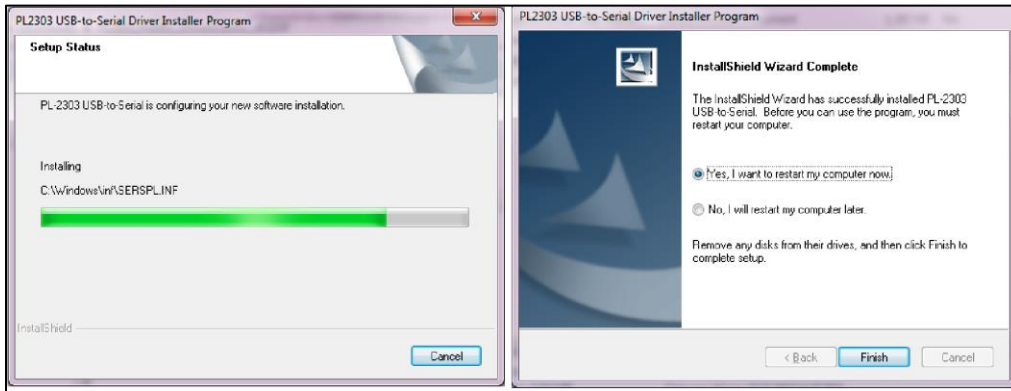


④ The extracted files/folder (firmware) should be located in the place of your choice.

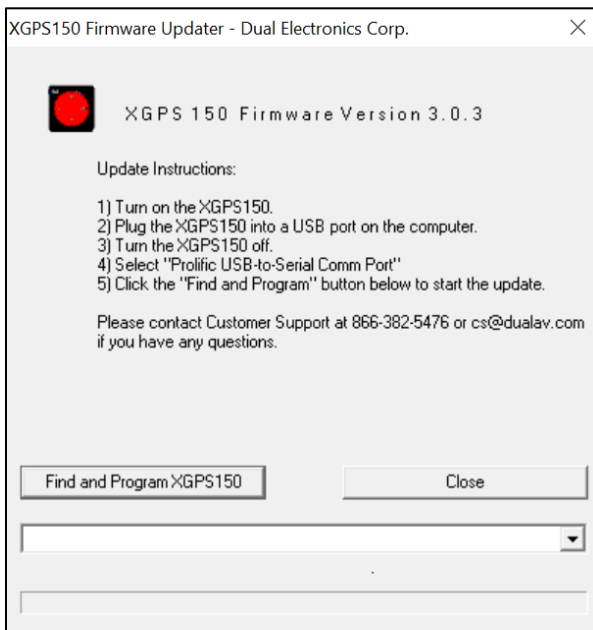


⑤ These three files should be available inside the folder.

4. Double click on PL2303\_Prolific\_DriverInstaller\_v1417 (XGPS150A driver) from the folder and begin the installation process. Once the process is completed, restart your computer if prompted.



5. Open the XGPS150 Firmware Updater program for v3.0.3 in the XGPS150 Firmware Update Pack folder.

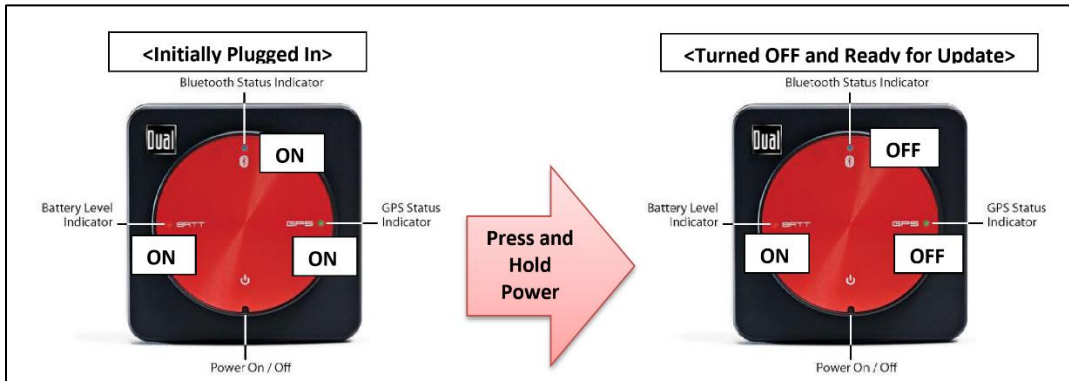


6. Remember to move the XGPS150A's switch towards the USB port. Connect your XGPS150 to your computer.

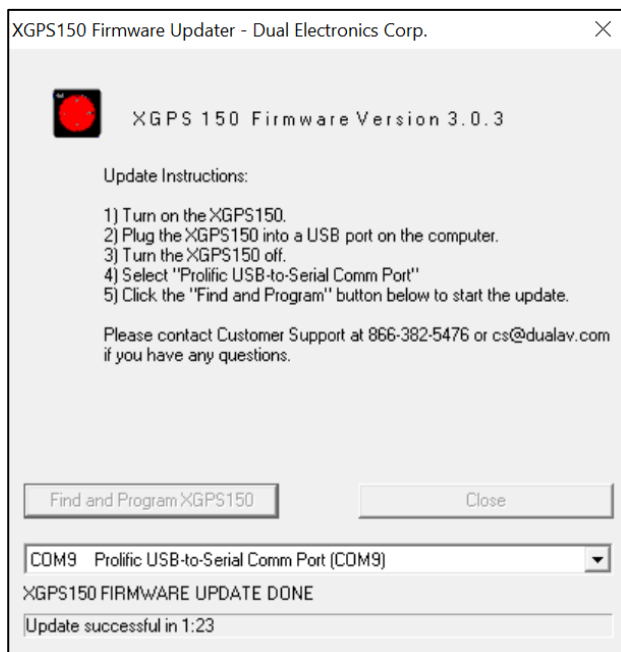




- To update the firmware, XGPS150 must be connected to your computer while the power is turned off. Press and hold the power button until the Bluetooth LED (Blue) and GPS LED (Green) are turned off.



- Follow the instructions listed on the XGPS150 Firmware Updater program.
- From the dropdown menu, choose a COM Port that says "Prolific USB-to-Serial COM Port". The COM Port number may vary.
- Press "Find and Program XGPS150".
- Once the update process is completed, you should be able to see the "XGPS150 Firmware Update Done" message at the bottom of the XGPS150 Firmware Updater program. Then, close the program and unplug your XGPS150A.





**Note:**

- 1) Do not disconnect your XGPS150 during the update process.
- 2) Remember to relocate the switch to either the USB port (Other) or the other way (Apple) depending on the mobile device you use with your XGPS150.
- 3) If the XGPS150 Firmware Updater program fails to locate your XGPS150, please try the following steps:
  - a) Reinstall PL2303\_Prolific\_DriveInstaller\_v1417 (the XGPS150 driver).
  - b) Make sure your XGPS150 is turned off when connected to PC.
  - c) Restart your computer.

If anything confusing or unexpected happens while updating, please contact us at [cs@dualav.com](mailto:cs@dualav.com).

**Thank you for using Dual XGPS150!**