



# XGPS160

SkyPro GPS Receiver

for iPad, iPod touch, iPhone and Android tablets

## Firmware Upgrade Guide

If you have any questions, please contact Dual customer support ([cs@dualav.com](mailto:cs@dualav.com)) before attempting the update.

### A. You will need

- XGPS160
- USB-to-mini-USB cable
- Computer running Windows OS (XP and later) with an available USB port



**If you're using a laptop, please proceed with the update with the power cord plugged in to ensure that the computer does not go to sleep/hibernation**



### B. Update Instructions

1. Go to Dual XGPS160 Firmware page (<http://gps.dualav.com/explore-by-product/xgps160/#tabs-8>)
2. Download the appropriate XGPS160 Firmware Update Pack
  - Apple Users (Non-Esri): **XGPS160 Firmware Update Pack (v.1.X.X)**
  - Android & Esri Users: **XGPS160 Firmware Update Pack (v.2.X.X & v.3.X.X)**
3. Unzip the file and you will see XGPS160 Firmware Update Pack folder.
4. In XGPS160 Firmware Update Pack folder, you will see the following items.

XGPS160 Driver

xgps160fwu-v2.4.0-v3.4.0

The name of the firmware update program may vary depending on the latest version

5. Open the XGPS160 Driver folder. Install the appropriate driver.



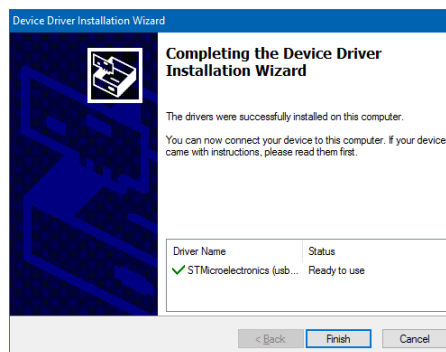
VCP\_V1.3.1\_Setup

For 32-bit Windows



VCP\_V1.3.1\_Setup\_x64

For 64-bit Windows








# XGPS160

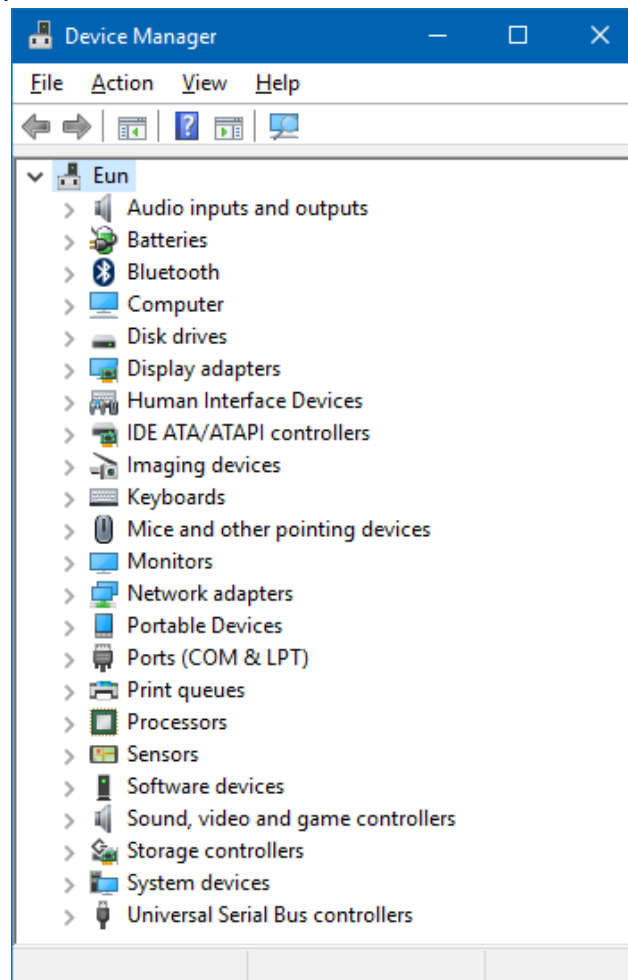
SkyPro GPS Receiver

for iPad, iPod touch, iPhone and Android tablets

## Firmware Upgrade Guide

6. After XGPS160 driver installation, restart your computer.
7. Connect XGPS160 to your PC.
8. Open **Windows Device Manager**. If you're prompted for an administrator password or confirmation, type the password or provide confirmation. If you can't locate **Windows Device Manager**, please try the following:

- **Windows 10:** Right click on the Windows Logo  > Device Manager.
- **Windows 8:** Search > (If you're using a mouse, point to the lower-right corner of the screen, move the mouse pointer up, and then click Search.) > type and select "Device Manager"
- **Windows 7:** Start button  > Control Panel > System and Security > System > Device Manager.
- **Windows Vista:** Start button  > Control Panel > System and Maintenance > Device Manager.



Example: Windows Device Manager on Windows 10



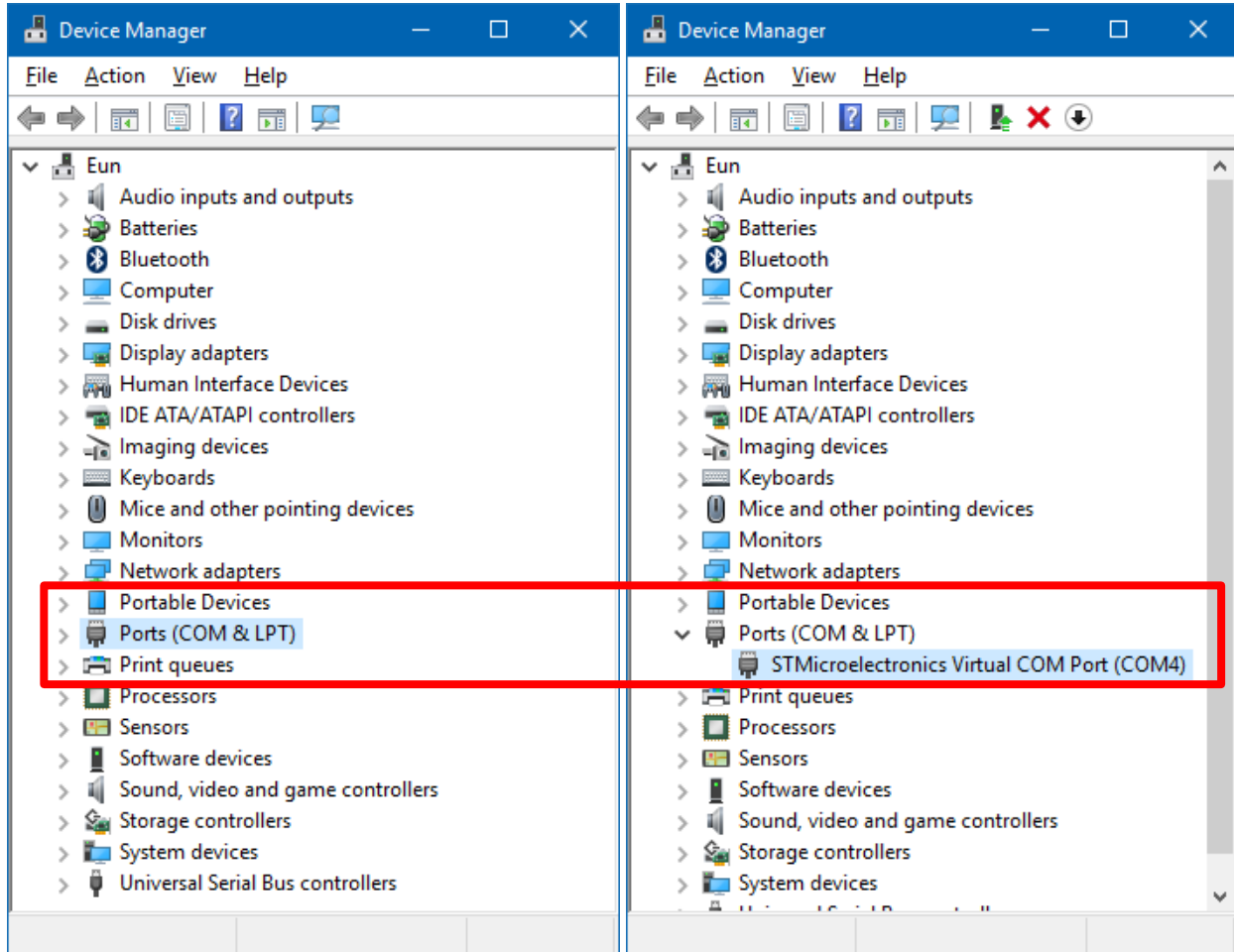
# XGPS160

SkyPro GPS Receiver

for iPad, iPod touch, iPhone and Android tablets

## Firmware Upgrade Guide

9. Locate Ports (COM & LPT), and find the COM number for the STMicroelectronics Virtual COM PORT. Your COM number may vary.






# XGPS160

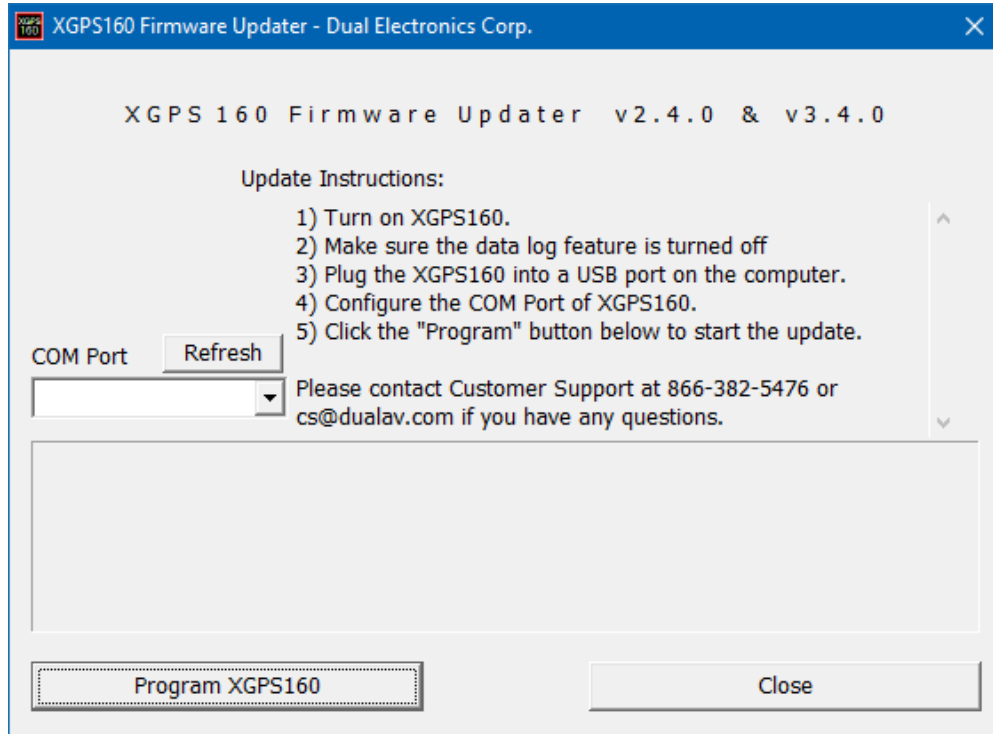
SkyPro GPS Receiver

for iPad, iPod touch, iPhone and Android tablets

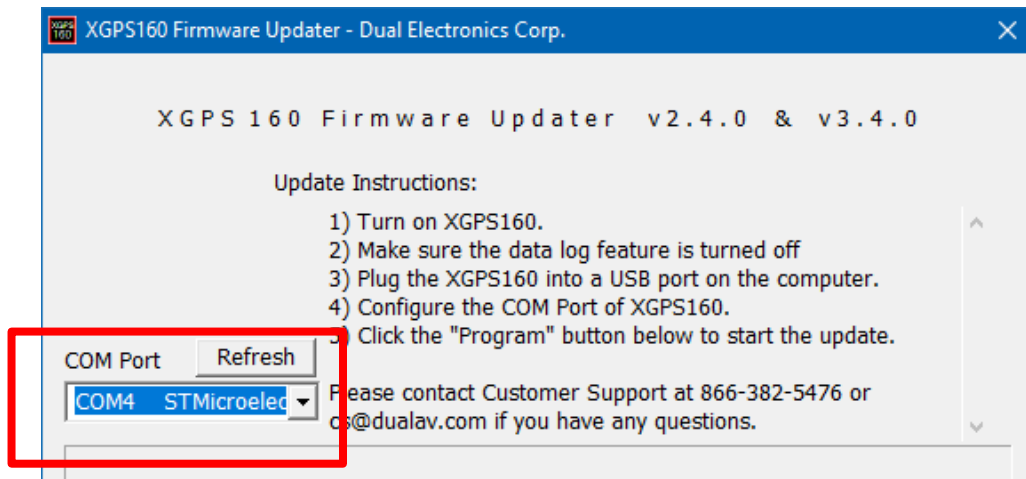
## Firmware Upgrade Guide

10. Open the XGPS160 Firmware Update Program, the version number may vary.

 xgps160fwu-v2.4.0-v3.4.0



11. From the COM Port dropdown menu, select your COM number for STMicroelectronics Virtual COM PORT





# XGPS160

SkyPro GPS Receiver

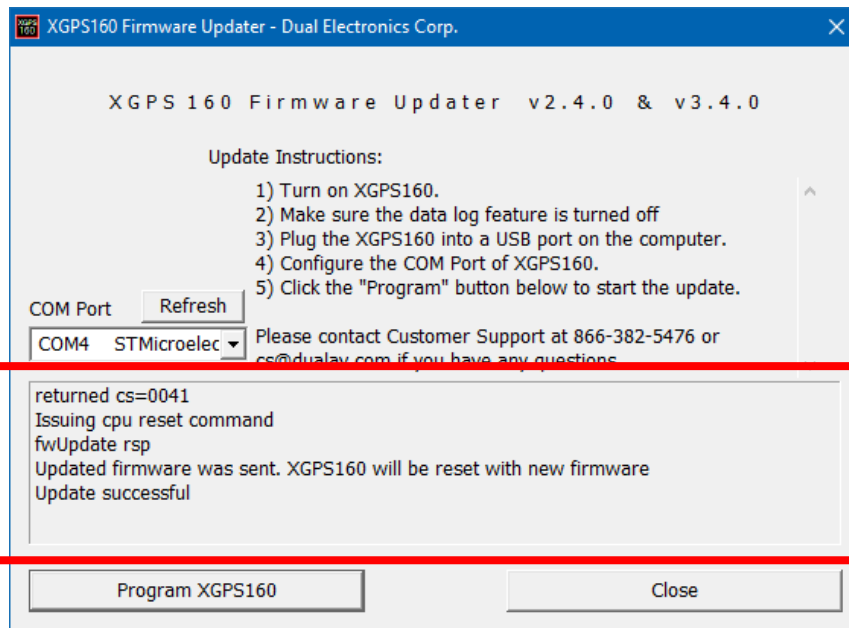
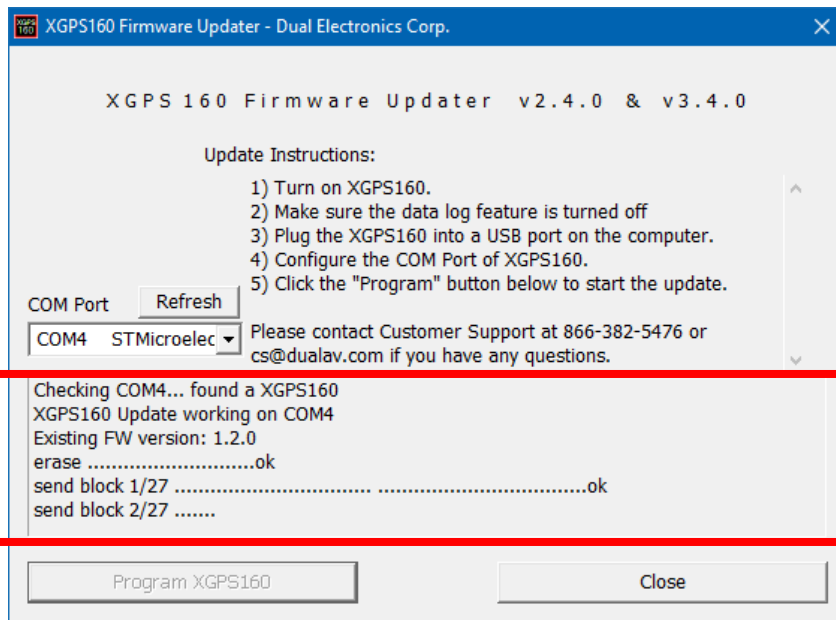
for iPad, iPod touch, iPhone and Android tablets

## Firmware Upgrade Guide

12. Click "Program XGPS160" button. The program will automatically find and update your XGPS160. Once you see "Updated firmware was sent. XGPS160 will be reset with new firmware. Update successful" on the program, Close the update program.



**IMPORTANT: Do not disconnect your XGPS160 during the update**





## **XGPS160**

**SkyPro GPS Receiver**

for iPad, iPod touch, iPhone and Android tablets

### **Firmware Upgrade Guide**

#### ***Troubleshooting:***

- If XGPS160 Firmware Updater program can't find your device, try the following options:
  - Reinstall the XGPS160 driver & Restart the computer
  - Make sure you have selected the correct COM Port (COM X)
  
- If the XGPS160 Firmware Updater program gets stuck while updating, contact Dual customer service

Email: ***cs@dualav.com***

Toll-free (U.S. only): ***1-866-382-5476***

(Monday – Friday, 9AM – 5PM EST)

**Thank you for using Dual XGPS160!**