



XGPS170 v.1.6.4 Update Guideline for PC Only

If you have any questions about XGPS170, please contact us at xgps170@dualav.com.

A. You will need:

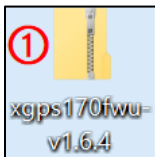
- XGPS170
- USB a – USB b cable (USB-to-mini-USB cable)
- Computer running Windows OS (7 & up) with an available USB port
- ADS-B Status Tool



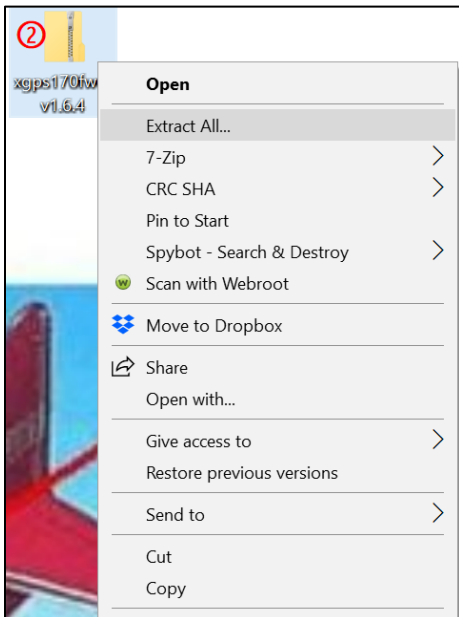
B. Update Instructions (10 Steps in Total)

Note: Step 4 – 7 only apply to Windows 7 and 8. However, if the XGPS170 USB Port does not install automatically on Windows 10, please follow Windows 7/8 update instructions.

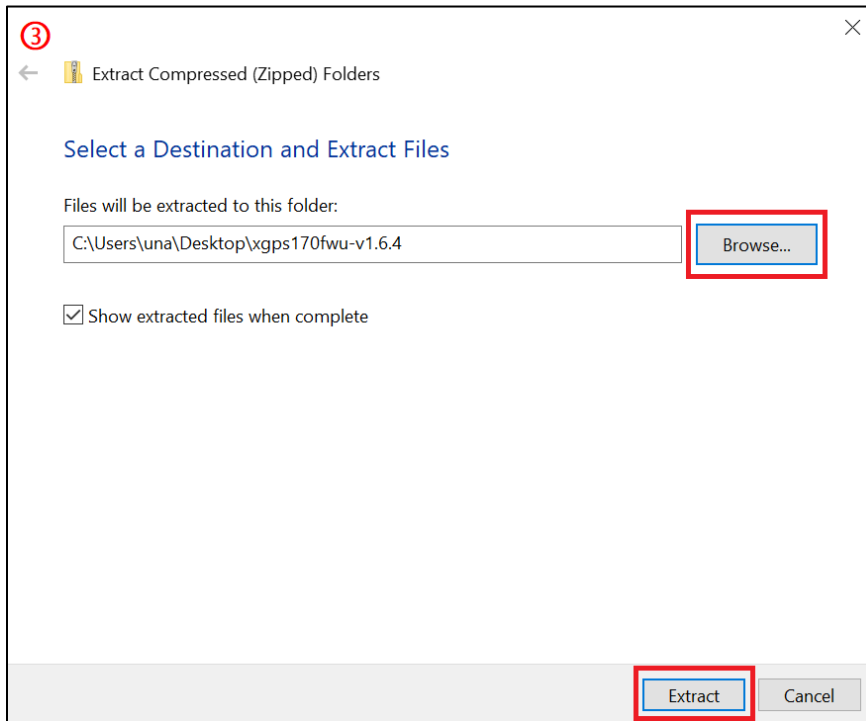
1. Download the zipped file to your computer from the Firmware tab at our webpage: <http://gps.dualav.com/explore-by-lifestyle/aviation/xgps170-for-efb-apps-with-weather-traffic/>
2. Unzip the downloaded firmware. Please follow the five sub-steps provided below.



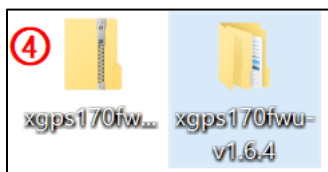
① Find the downloaded zip file on your computer.



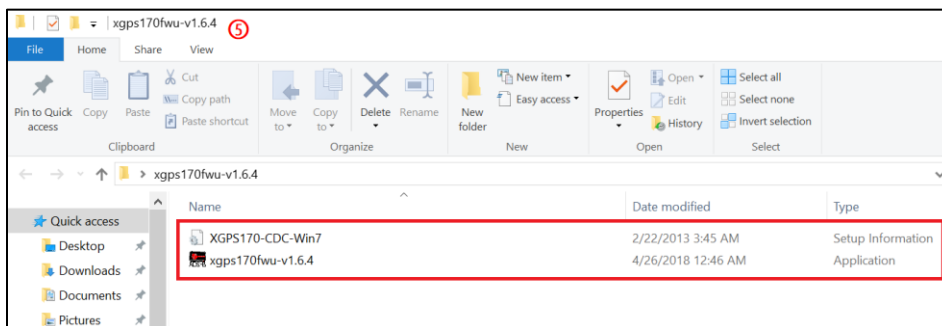
② Click the right button on your mouse/trackpad and choose Extract All.



③ Go to Browse and choose a place on your computer to extract the zip file. Then, click Extract.



④ The extracted files/folder (firmware) should be located in the place of your choice.

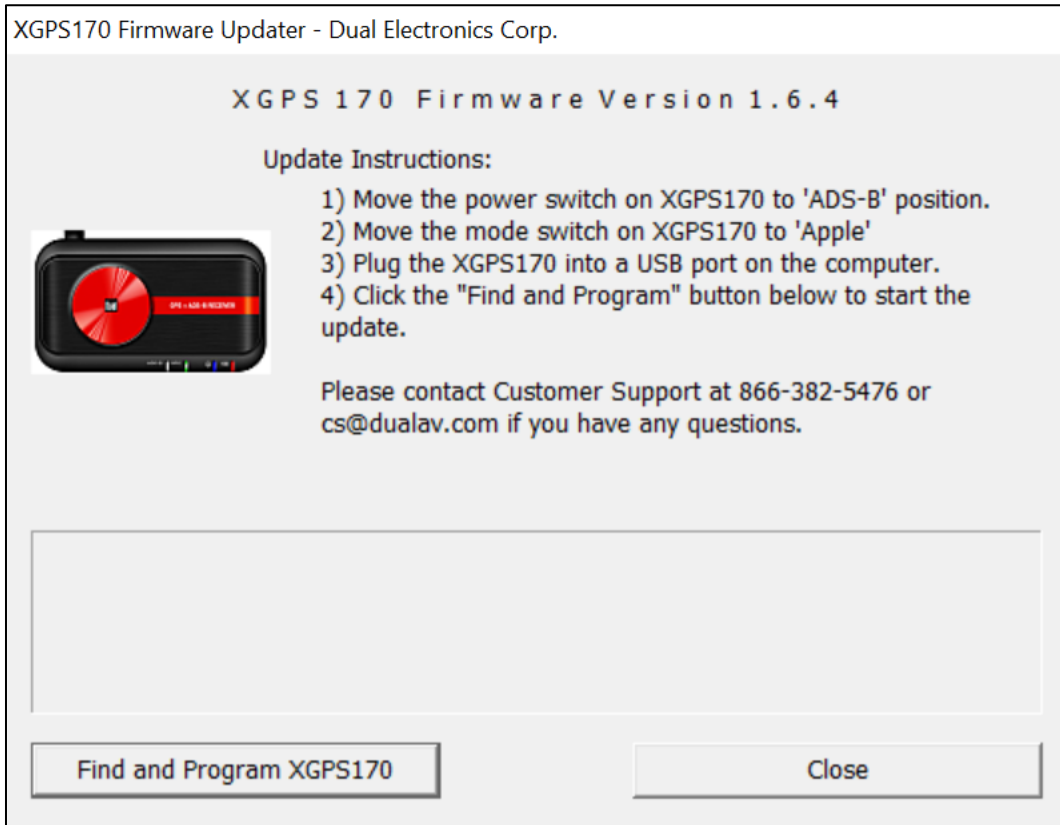


⑤ These files should be located inside the folder.

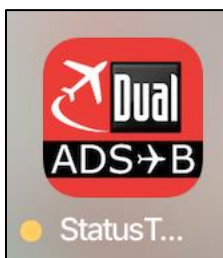
3. Connect the XGPS170 to USB drive using the USB a–USB b charging cable that was supplied with your XGPS170.
4. Open Device Manager. (You can open Device Manager by either typing “device manager” in the search bar or by accessing directly from Control Panel)
5. In Device Manager, please find “XGPS170” under Other Devices.
6. Right click on “XGPS170” and select Update Driver. Then, select the folder in which the XGPS170 driver file (XGPS-170-CDC-Win7.inf) is located and follow the installation process.



7. If the installation was successful, "XGPS170 CDC COM Port" should appear under the Ports (COM&LPT) section.
8. Run the XGPS170 updater program (xgps170-fwu-v1.6.4.exe) and follow the instructions. *(Please see the picture right below)*



9. Disconnect, power-off and then power-on the XGPS170 device.
10. Click on the Status tab from the ADS-B Status Tool app to check if the new firmware has successfully been installed. *(Please see the pictures right below)*





T-Mobile 4:47 PM 63%

Status

Device Status

Connecting Device	XGPS170-373456
GPS Battery	72%
Firmware Version	1.6.4

Position Information

Latitude	28° 46' 43.561" N
Longitude	81° 22' 58.195" W
Altitude	75.0 ft
UTC	20:47:51
Heading	--
Speed	0.0 mph

Position Confidence

Horizontal	Good
Vertical	Good
3D	Fair

Status Satellites ADS-B & AHRS Traffic

Note: This firmware is compatible with XGPS170 only. Please do not use this for XGPS170D/190.